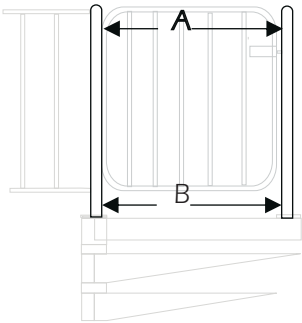




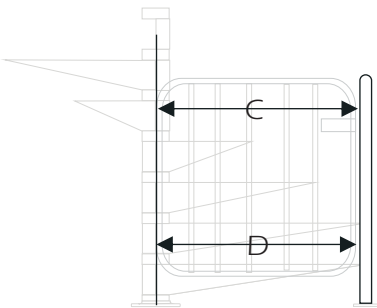
Standard Detail Gates

Top Gate



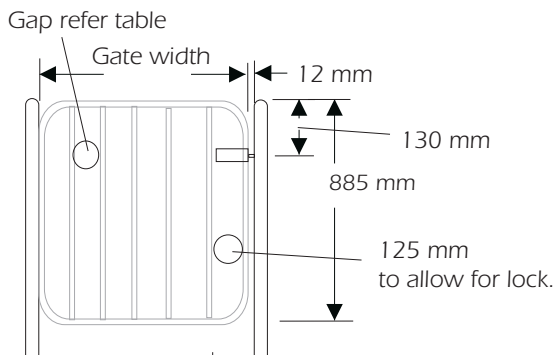
Stair diameter-mm	1880	1750	1500	1300	1070
Gate width-mm	826	761	636	536	421
Number of bars	5	5	4	3	2
Centers balusters-mm	133	120	118	124	129
Width between balusters-mm	117	104	102	108	113

Bottom Gate



Stair diameter-mm	1880	1750	1500	1300	1070
Gate width-mm	861	796	671	571	456
Number of bars	5	5	4	3	3
Centers between balusters-mm	140	127	127	136	98
Width between balusters-mm	124	111	111	120	82

Gate Detail



Site Measure Details

Measurements required to order an enzie gate
(Clear distance between posts or column and post, in two locations as shown)

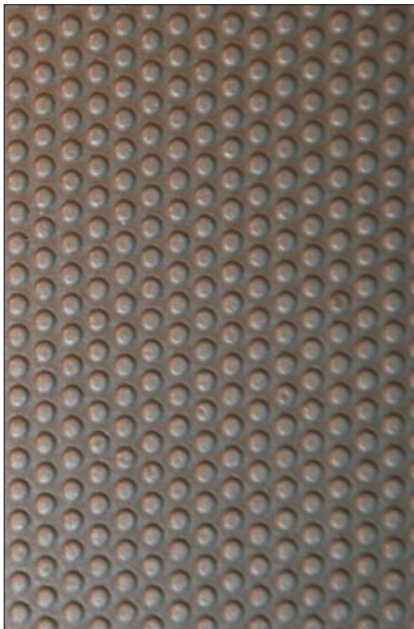
Customer.....
Address
.....P/C.....

Phone

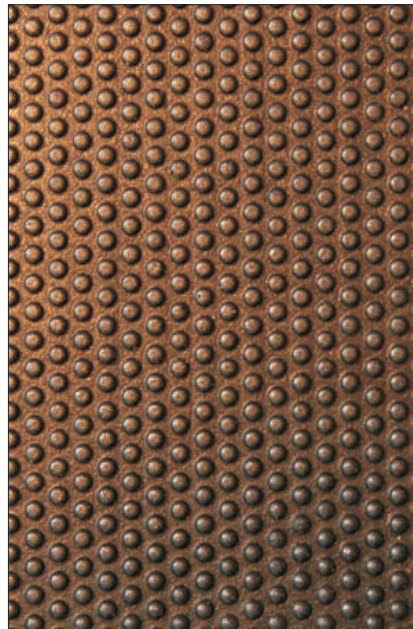
Dimensions:
A= B=
D= C=

Colour

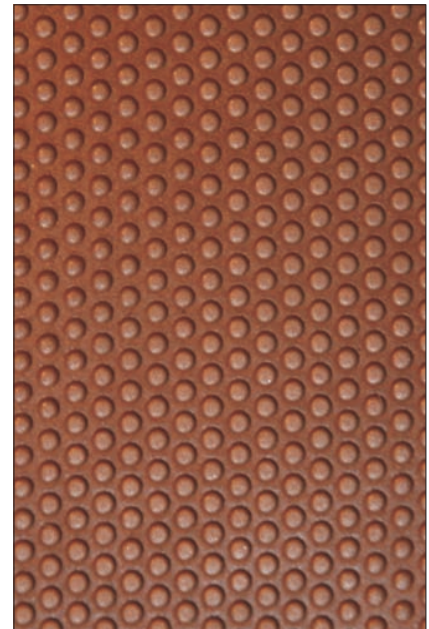
Tread Pads



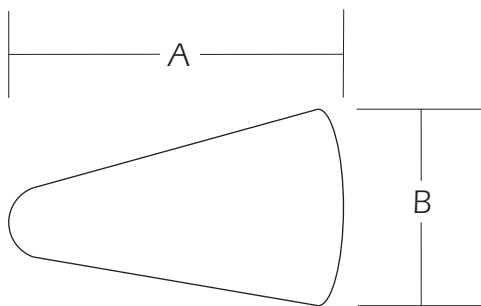
Gray



Black



Brown



To Suit	A	B	Description
Landing	750 mm	450 mm	Rectangular sheet
Landing tile	225 mm	225 mm	Square tile
1070 & 1300	435 mm	280 mm	Small
1500	535 mm	290 mm	Medium
1750 & 1880	665 mm	295 mm	Large
Timber tread	19*2mm	19 mm	Round

enzie® tread pads are made from 3 mm thick EVA material which gives a soft safe surface to walk on. It is supplied cut to size with ready to use self stick adhesive, just throughly clean surface and dry surface. Place material 3 mm from the edge of the step.

Aluminum Inserts and Clip Ons

1. The illustrated panels are available as optional intermediate balusters for stairs and balcony railing .
2. Prices shown are per unit.
3. Allow an additional ten working days for completion of stairs which has casting.

