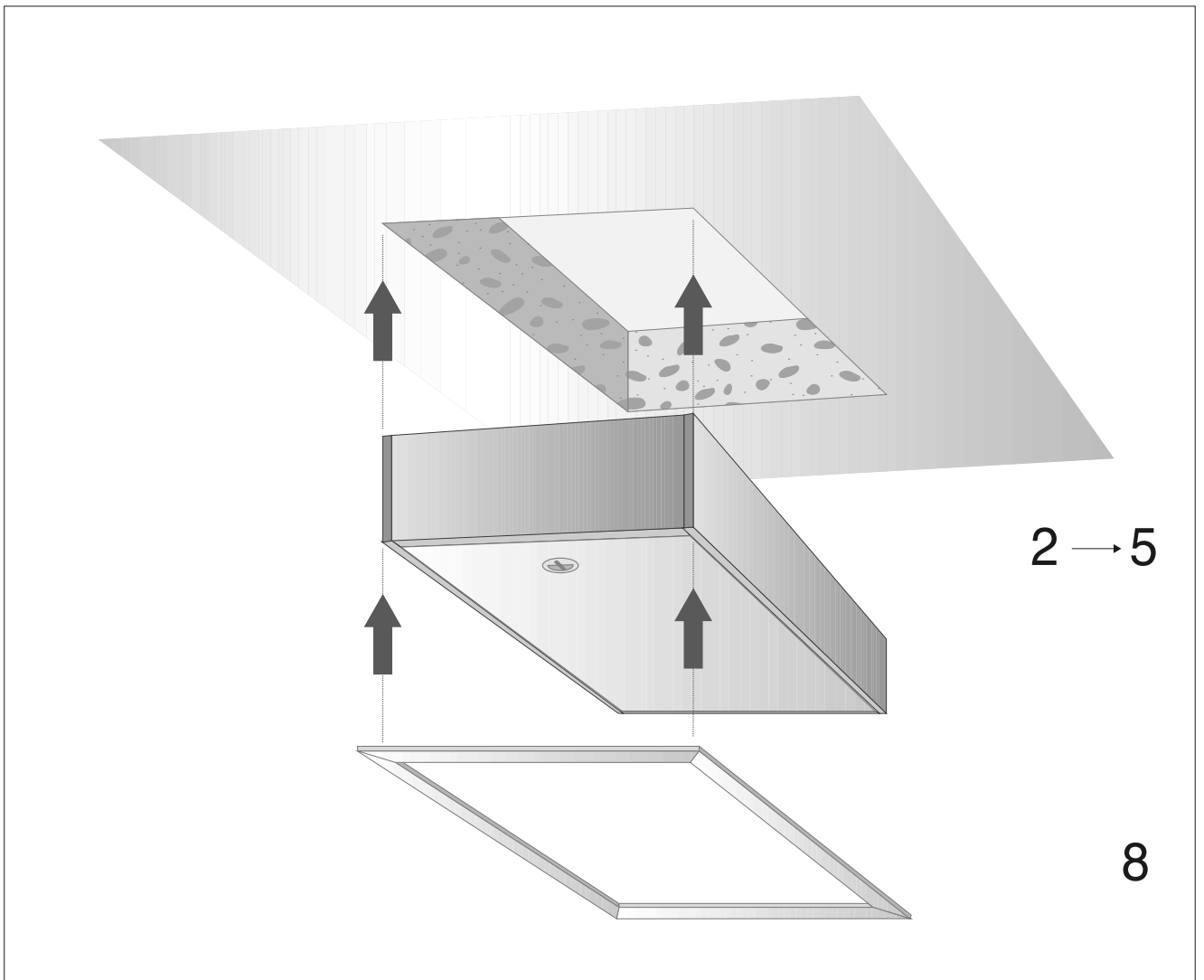
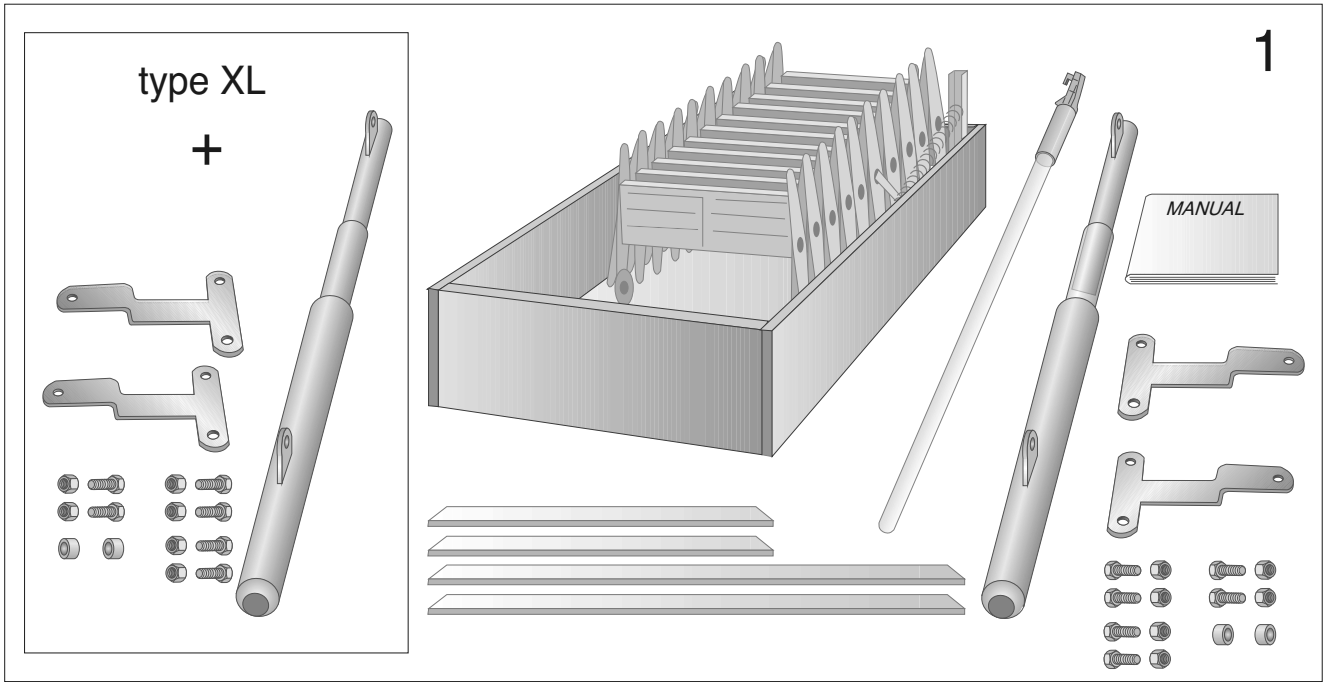
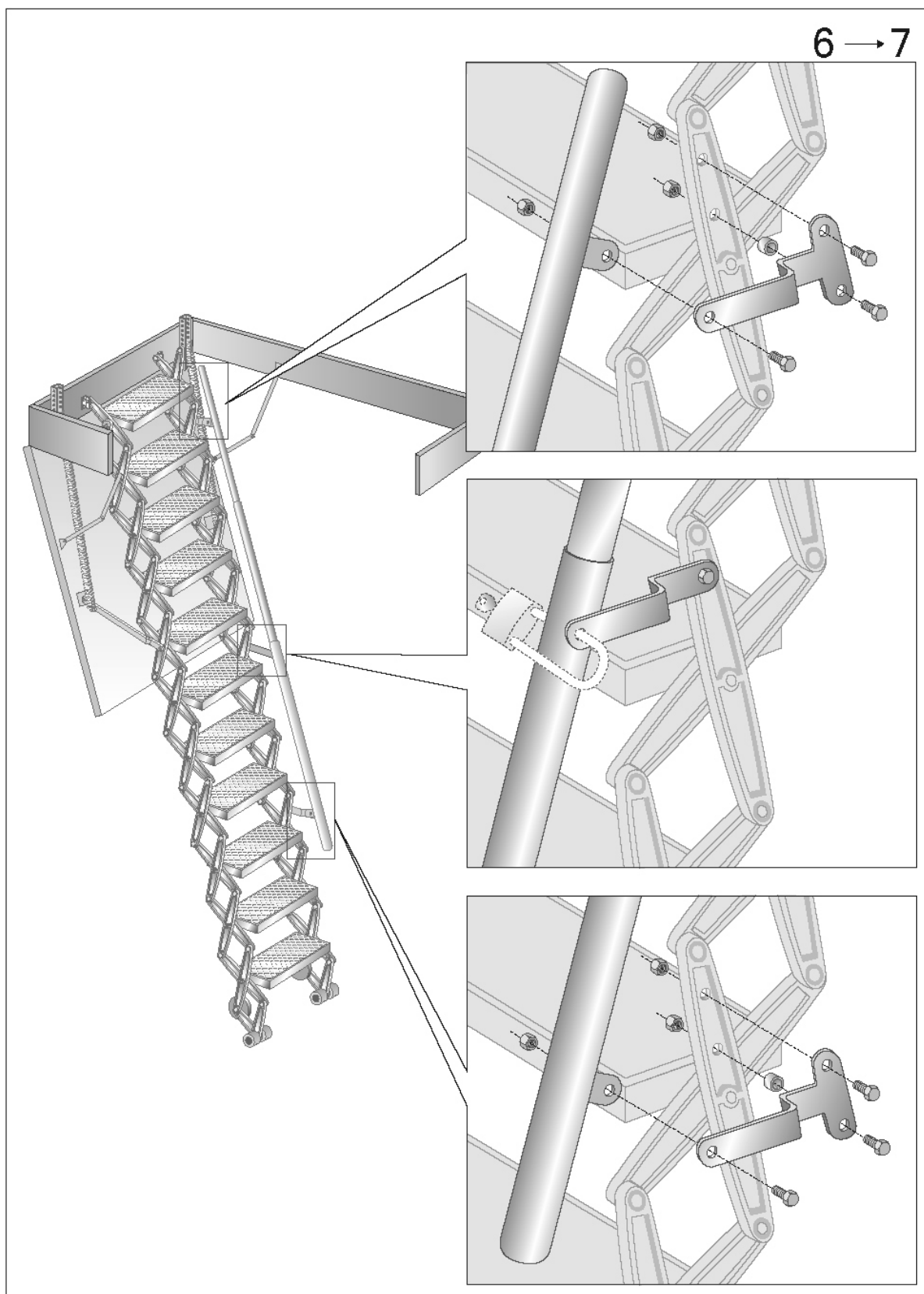


**enzie** special ROOF SPACE LADDER

# INSTALLATION INSTRUCTIONS







## DECLARAION

**enzie** roof space ladders combinations consisting of a roof hatch and/or scissor stairs are safety tested. The approval is based on European Labour Safety Regulations such as 2000/45/EC and European standards. The construction strength is tested according to EN-ISO 14122-3

## INSTALLATION

1 Remove packaging.

2 Place the stairs from the bottom side with closed casing into the opening and support it temporarily.

- Suspended ceiling: Place into the lining between ceiling and roof construction so that cover is flush with ceiling.
- In case the casing is installed into the roof clearing ensure that the roof cover mechanism is not obstructed and operates properly.

3 Adjust frame to be level, square and tensionless.

4 Ensure cover operates properly.

5 Attach the casing to the lining or roof construction with appropriate fasteners.

6 Check with extracted stairs if the steps are level and adjust if necessary.

7 Attach the telescopic handrail with the internal tube up and the external tube down.

8 Attach the included architrave with closed cover starting at the hinge side. Leave a 3 mm clearance on all other sides.

**enzie Space Saving Stairs Pty. Ltd.**

287 Arthur Street  
Fairfield, Victoria  
Australia, 3078

Ph. +61 3 9481 2255

Fax +61 3 9481 8919

ACN: 126 708 118

[www.roofspaceladders.com](http://www.roofspaceladders.com)

